

THANK YOU FOR YOUR SUPPORT!

I started Lucke in 2013, shortly after going through a 'Big Chop'. I needed a cute, convenient, and simple way to grow my hair back. NO wig in the store looked natural, and I HAD to look good for work. Flash forward 1 year later, I was quitting my corporate job at Microsoft to be a full time entrepreneur!!! Lucke By Keisha is now a million dollar company and a dream I never imagined! I am so thankful for your trust in what we do and your support! Blessings!



Keisha Credit

SUPERIOR DESIGN & QUALITY

We traveled the world to source the highest quality hair, strongest materials, and devote hours of training to consistently bettering our skills and product. Delivering you a hairpiece you are a proud to wear, and we are proud to create! is our goal at Lucke By Keisha.

OH, IT'S NICE TO BE A #LUCKEGIRL



5 Star
RATING

TAG US | REVIEW | SHARE

Before you pass go...

- ATTENTION! -

1

We do MOST of the work for you!

Your wig will come to you pre styled and ready to go. However, It is still important for you to really make the wig your own. You may have to do a little tweaking to get your look perfect- have FUN with it!

2

Lace is Delicate- Handle with Care

The large parting space of a Lucke wig is made of high quality lace. It is very durable, but can tear and shed over time. Be gentle! **Remember: ALL Lucke wig types can be parted & styled in various ways!**

3

Your wig is a piece of ART!

Each and every one of our wigs is handcrafted and uniquely made. We custom color each look, and layer each style. Expect a little flare, as some wigs may vary slightly from stock wig photos.

4

Care & Maintenance is KEY!

The amount of love placed on your wig will directly impact the longevity of your piece. Lucke wigs last AT LEAST two years with proper care. Wash your baby often, and use high quality products. Check out our care videos for more tips.

Want 10% OFF

Your Next Order???

Leave us a Review over on Facebook or Better Business Beaurea and get 10% OFF Your next Lucke purchase!!!



FB: www.Facebook.com/LuckeByKeisha

BBB: "Lucke By Keisha"

Be amongst the 30K+!!!

Follow Us on Instagram too! @LuckeByKeisha

Lucke By Keisha LLC | Seattle, WA 98178

Appointment by Consultation ONLY | International Shipping

LuckebyKeisha@outlook.com | (206)717-4479

www.LuckeByKeisha.Com

Lucke
By Keisha ©

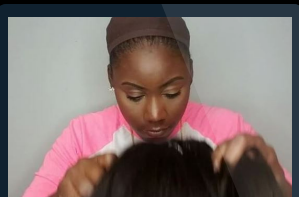
Wig Care & User Guide

GIRL, WE'VE GOT YOU COVERED!

Want
MORE Tips???
SUBSCRIBE ONLINE

HOW TO PUT ON YOUR LUCKE WIG

*No Clips,
No Combs,
No Glue Required!*



THE BEST WAY IS TO
SEE IT BY VIDEO!

On our website, www.LuckeByKeisha.com,
click "How-To" and watch tons of helpful tutorials!

When placing your wig on your head, hold it from the back, and place the wig on "front to back". Adjust the wig once on your head, but be careful NOT to pull the wig by the lace as it can tear. The wig WILL feel snug fit. To know if your wig is on straight, the tag should sit in the middle of your head.

1

"Throw On and Go!"

Simply place the wig on your head and be out!

Tip: If you'd like a little added security, purchase a
"Wig Grip" Band on our site!

1

Sew it Down: "Removeable Sew-In"

If you like sew ins, you can go ahead and sew your wig around the perimeter! Be careful removing as to not cut it!

1

Optional! Safely use Adhesives

This is best for multi-day longer wear. Please use caution when using and removing ANY adhesive. Seek a professional if you are unsure.

HOW TO MAKE YOUR WIG LOOK NATURAL



- Baby Hairs -

Your wig is customized and tinted before being shipped, but it is OKAY to do further tweezing and create more baby hairs if you'd like. Just remember to be gentle on the lace. We cut the lace before shipping, so just pull out a few hairs from the front and snip jaggedly to your desired length.



- The "Concealer" Trick -

Maybe your lace is a little too light, or a little too dark. A fave trick is to use concealer on the part for blending! Use your normal cream concealer on top, or use a powder underneath. You can even try using mascara on your roots if you'd like them a little darker! It will last on your wig until your next wash. Try it out!



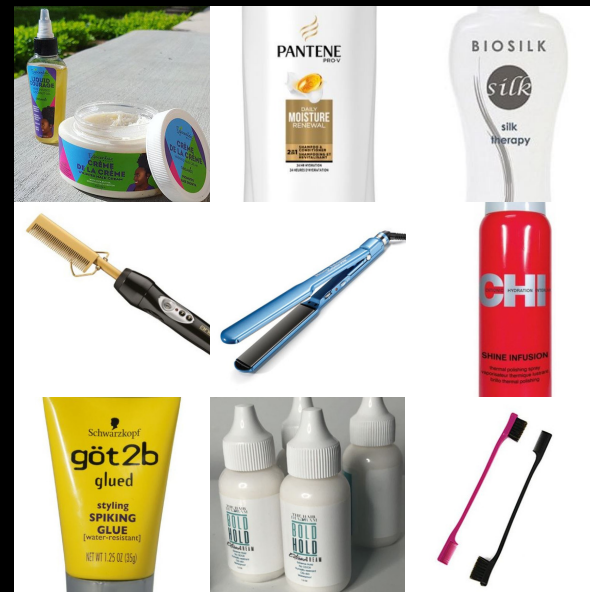
WIG REPAIR & REFRESH SERVICES

Don't you worry! Send it in!
We can fix it!

Think your wig needs a little love? If you're a little rough with your baby, or you just want to make it a normal thing, you can send your wig to us for work. We can do It all from wig stretching and re-sizing, wash and condition, closure replacements, re-coloring, re-styling, adding more hair for density, and simple routine maintenance! Shoot us an email to get started!



PRODUCTS WE LOVE



- Under the wig: Egocentric Beauty:** Organic Haircare to moisturize your scalp and promote hair growth under your wig.
- Wash & Condition: Pantene 2n1:** This really gives the hair a good wash while also restoring moisture.
- Heat Protectant: Biosilk:** ALWAYS use a heat protecting product when using styling tools to protect the hair and increase longevity.
- Styling: Hot Comb:** The HOLY GRAIL! Use the hot comb for styling but also to easily move the part & flattening the top!
- Styling: Flat Iron:** Your wig is human hair, so it can handle heated tools. We love the Babyliss Pro, but use what you enjoy!
- Shine: Chi Silk Infusion:** If you want a little more 'natural shine' to your piece, simply spray a little and finger comb it through.
- Install: Got 2b:** You can use this gel as a safe alternative for wig glue. It wears off easily with water. Check out the tutorial!
- Install: Bold Hold:** This is the ONLY wig adhesive we recommend. BEST if done professionally. Use with care.
- Baby hairs: Double Brush:** Made with a tiny comb AND brush, it's perfect for slicking those baby hairs down with a little gel!

HOW TO WASH YOUR WIG

Your wig will look and feel its best when clean. Wash your wig as often as you need. Most people wash after 8-10 wears. To wash, do so in the sink, with luke warm water. Rinse your wig, and apply shampoo. Hold your wig gently with one hand and use the other hand to finger detangle (ONLY when product on it). Rinse once again and apply your conditioner. You can use a wide tooth comb as well. Work TIP to ROOT. Let it sit for 5-10 minutes and detangle thoroughly. Rinse. Rinse. Rinse. Be SURE to get all residue out of your wig or it won't feel goood.